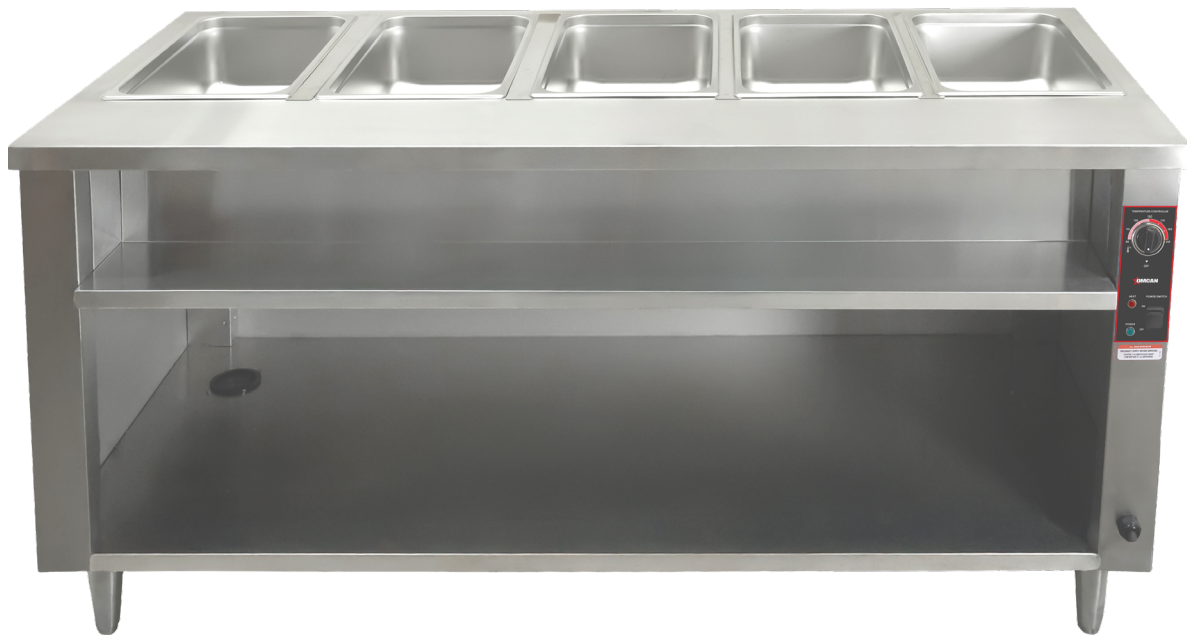




SERVING THE FOOD INDUSTRY SINCE 1951

## Electric Steam Tables, Single Tank with Cabinet

ITEM:	49020	49021	48790
MODEL:	FW-CN-0003-C	FW-CN-0004-C	FW-CN-0005-C



### Durable, Convenient, and Easy to Clean

Perfect for assisted serving in cafeterias, buffets, and catering events, these steam tables come with a polycarbonate cutting board as well as extra storage compartments on the cutting board/control panel side. Great for on demand food service.

- Does not require spillage pan
- Single connected large water reservoir
- Attached cutting board
- Simple temperature adjustment

Telephone: 1-800-465-0234

Fax: (905) 607-0234

Email: sales@omcan.com

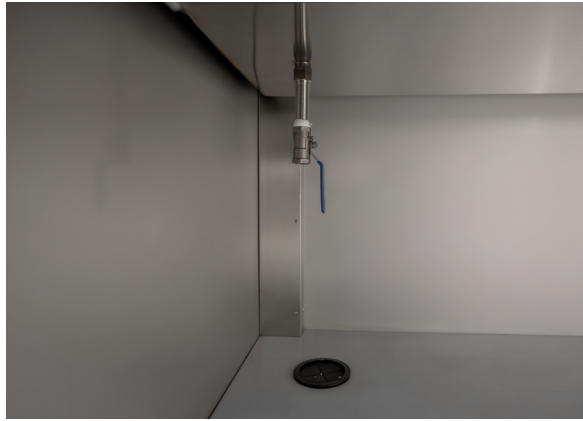
Website: www.omcan.com



Authorized Dealer



Made in China



## TECHNICAL SPECIFICATION

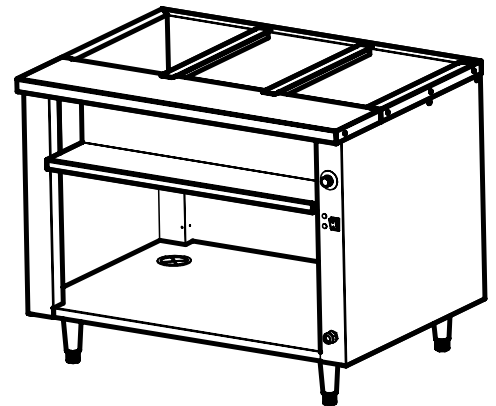
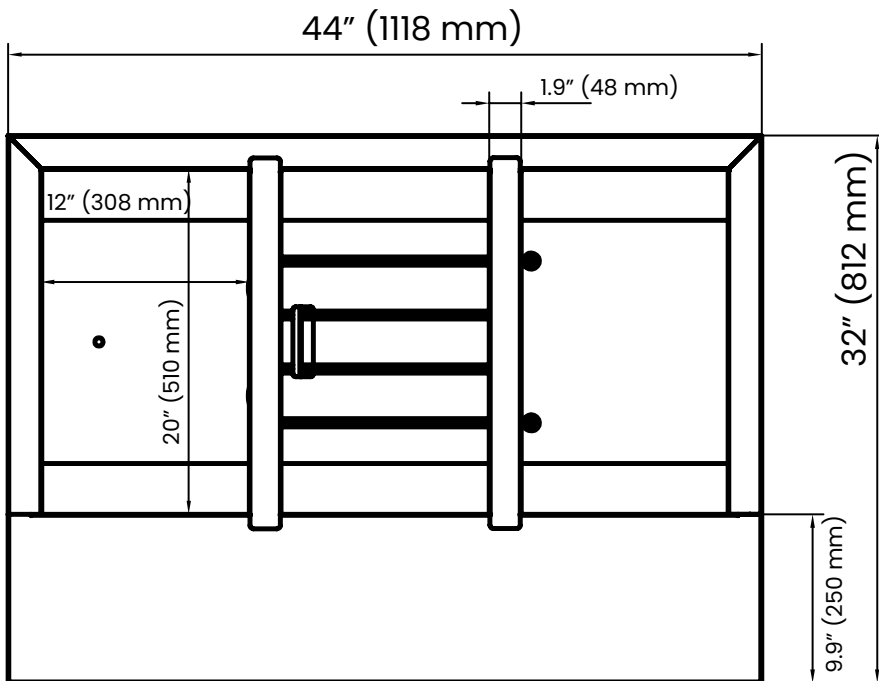
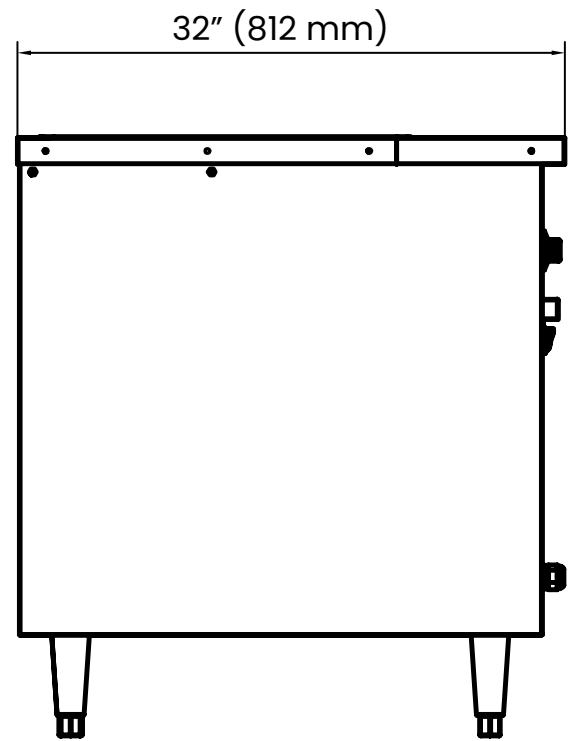
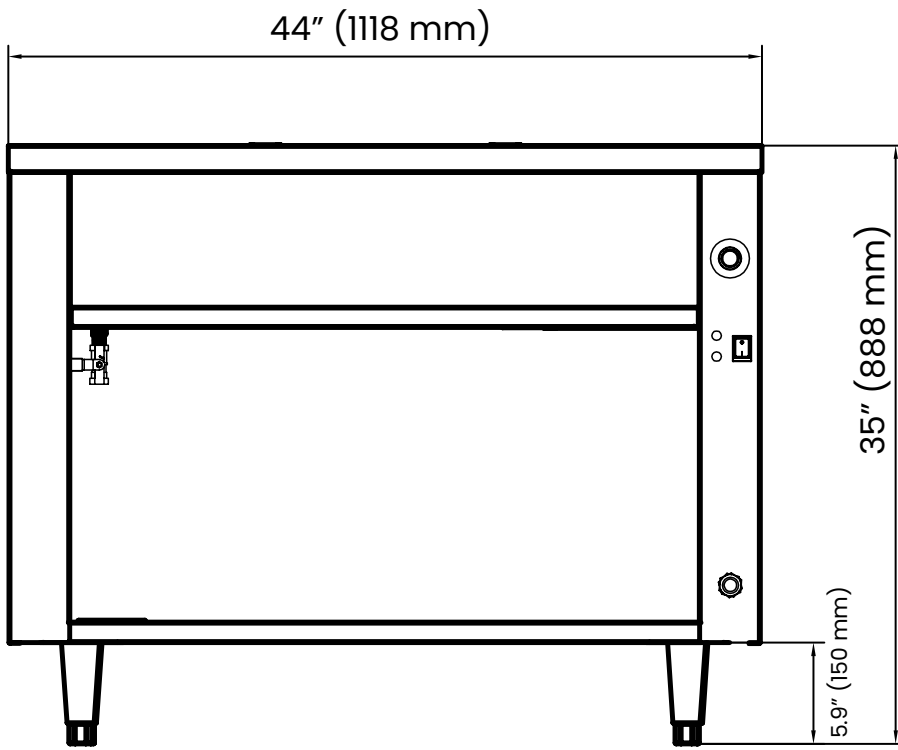
Features	44" 3 Pan	58" 4 Pan	72" 5 Pan
Item	49020	49021	48790
Model	FW-CN-0003-C	FW-CN-0004-C	FW-CN-0005-C
Max Temperature	203°F (95°C)		
Pan Type	Full Size GN		
Pan Capacity	3	4	5
Power	4000 W		
Amperage	16.7 A		
Electricals	240 V / 60Hz / 1 Ph		
Net Dimensions (WDH)	44" x 32" x 35" (1118 x 811 x 888 mm)	58" x 32" x 35" (1472 x 811 x 888 mm)	72" x 32" x 35" (1828 x 811 x 888 mm)
Shipping Dimensions (WDH)	45" x 32" x 36" (1148 x 890 x 900 mm)	59" x 35" x 36" (1504 x 890 x 900 mm)	74" x 35" x 36" (1860 x 890 x 900 mm)
Net Weight	132 lb (60 kg)	165 lb (75 kg)	200 lb (91 kg)
Shipping Weight	194 lb (88 kg)	247 lb (112 kg)	301 lb (137 kg)

## ACCESSORIES ( For GN pans, please see last page)

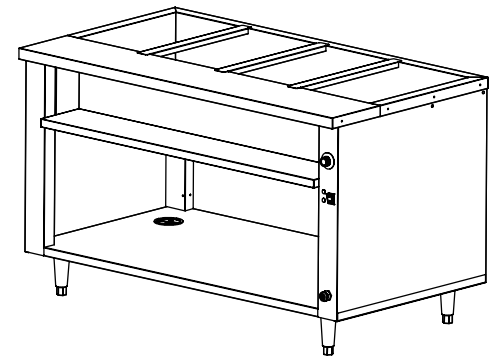
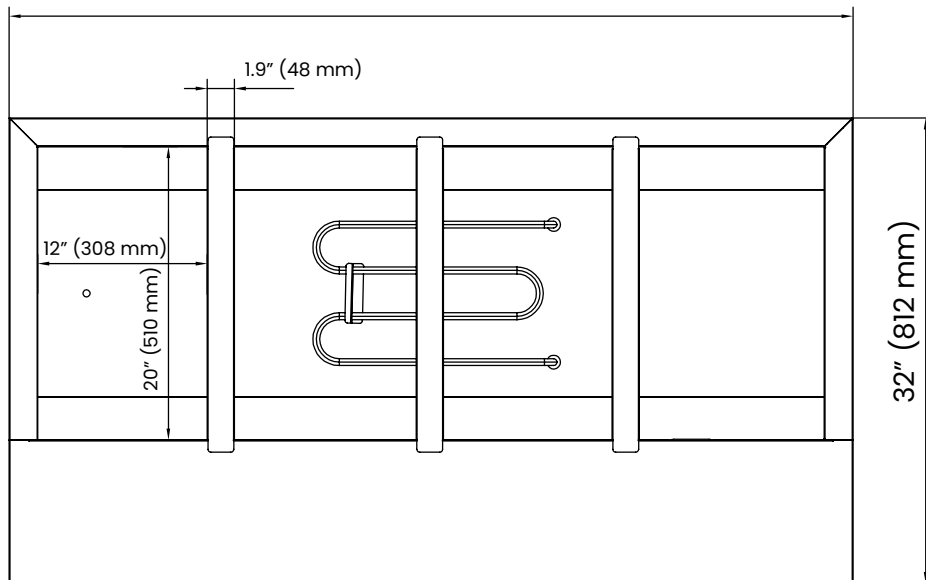
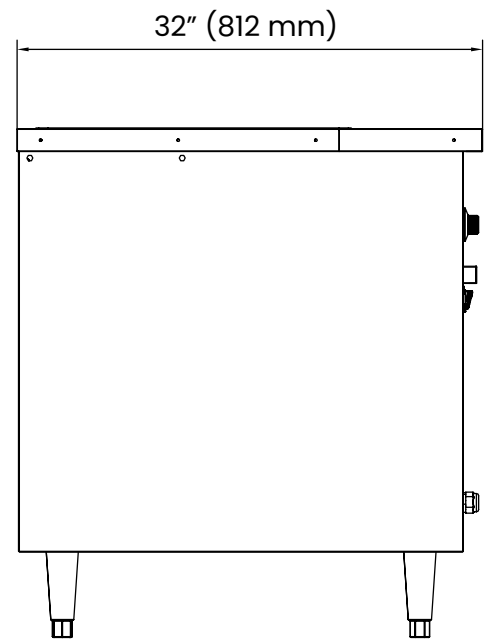
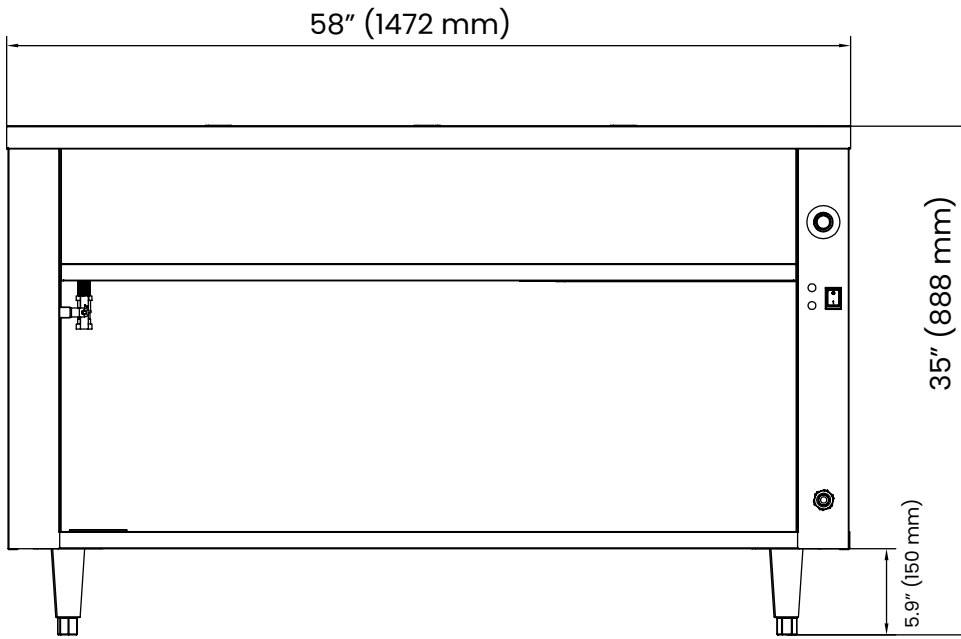
Item	44" 3 Pan	58" 4 Pan	72" 5 Pan
Roll Top Cover	81124		
Sneeze Guard	47022	47023	47024
Overshelf	47018	47019	47020
5" Caster (w/Brake)	14395		
5" Caster (No Brake)	47599		



## TECHNICAL DRAWING (49020)



## TECHNICAL DRAWING (49021)



## TECHNICAL DRAWING (48790)

