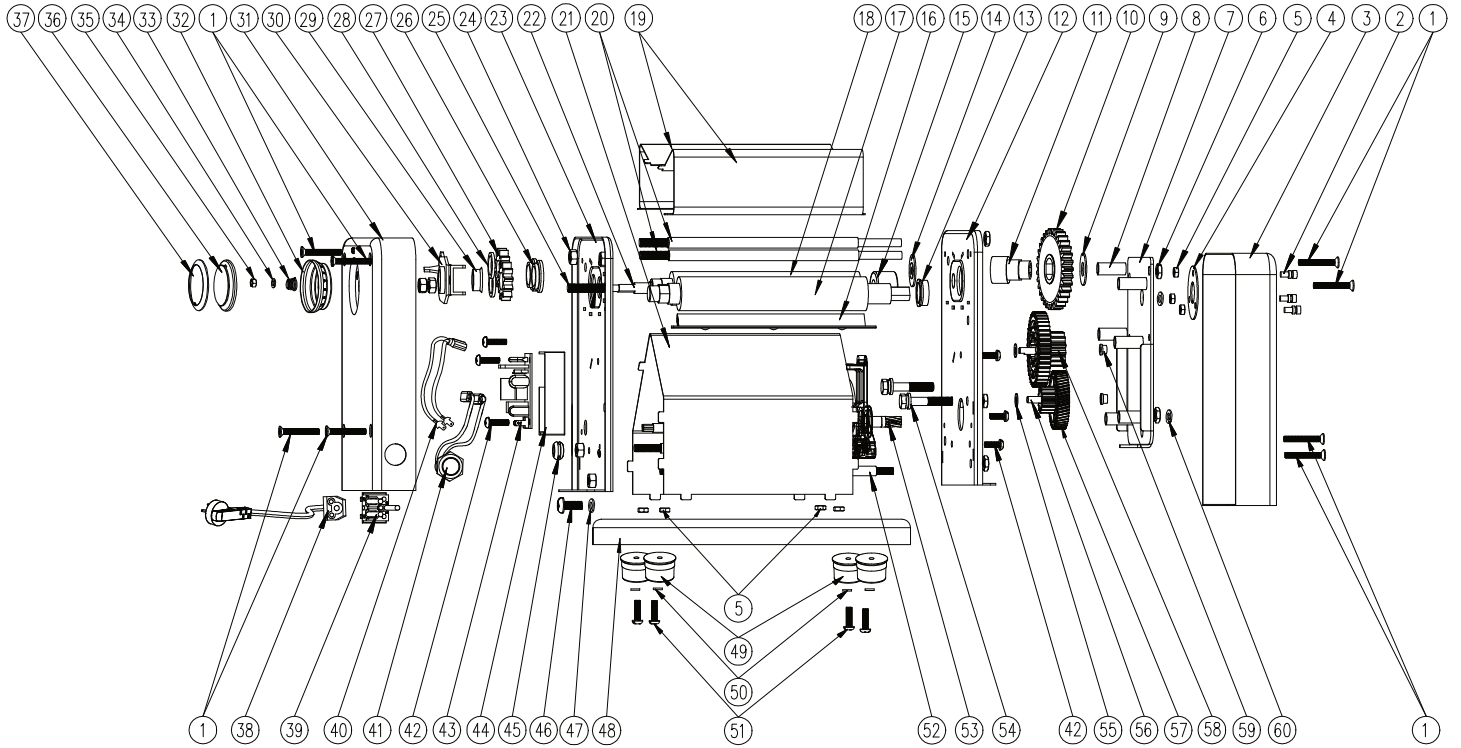


Parts Breakdown

Model PM-CN-0150N-S 48367



Parts Breakdown

Model PM-CN-0150N-S 48367

| Item No. | Description | Position | Item No. | Description | Position | Item No. | Description | Position |
|----------|-----------------------------------------------|----------|----------|--------------------------------------------------------------|----------|----------|---------------------------------------------------------------------|----------|
| AV373 | Cross Groove Countersunk Head Screw for 48367 | 1 | AV393 | Motor Cover for 48367 | 21 | AV413 | Electric Push-Button Switch for 48367 | 41 |
| AV374 | Pin for 48367 | 2 | AV394 | Eccentric Shaft for 48367 | 22 | AV414 | Cross Recessed Pan Head Screws for 48367 | 42 |
| AV375 | Right Cover Plate for 48367 | 3 | AV395 | Left Bracket for 48367 | 23 | AV415 | Circuit Board for 48367 | 43 |
| AV376 | Pressure Washer for 48367 | 4 | AV396 | M6 Hex Nut for 48367 | 24 | AV416 | Circuit Board Box for 48367 | 44 |
| AV377 | M4 Hex Nut for 48367 | 5 | AV397 | Hex Head Cap Screw for 48367 | 25 | AV417 | 10mm Rubber Ring for 48367 | 45 |
| AV378 | M6 Hexagonal Thin Nut for 48367 | 6 | AV398 | MD150-2 Auxiliary Shaft Gasket for 48367 | 26 | AV418 | Cross Recessed Pan Head Screws for 48367 | 46 |
| AV379 | Upper Board for 48367 | 7 | AV399 | Powder Metallurgy Pressed Gear for 48367 | 27 | AV419 | φ5 Spring Pad for 48367 | 47 |
| AV380 | Supporting Sleeve for 48367 | 8 | AV400 | Improved Gap Pad for 48367 | 28 | AV420 | Base for 48367 | 48 |
| AV381 | Shaft Head Gasket (Large Hole) for 48367 | 9 | AV401 | 16 Type Shaft Sleeve for 48367 | 29 | AV421 | Large Electric Foot (New) for 48367 | 49 |
| AV382 | Roller Large Gear for 48367 | 10 | AV402 | Shaft Seat (Type 2 Electric) for 48367 | 30 | AV422 | φ4 Flat Pad (Large) for 48367 | 50 |
| AV383 | Connecting Shaft for 48367 | 11 | AV403 | Left Cover Plate for 48367 | 31 | AV423 | Cross Recessed Pan Head Screws for 48367 | 51 |
| AV384 | Right Bracket for 48367 | 12 | AV404 | Handwheel Cover (20 Type/7-Hole) for 48367 | 32 | AV424 | M6 Double Headed Screw (150) for 48367 | 52 |
| AV385 | Spindle Bearing for 48367 | 13 | AV405 | Pagoda Spring for 48367 | 33 | AV425 | MD150-2 DC Motor for 48367 | 53 |
| AV386 | Blunt Gasket for 48367 | 14 | AV406 | φ5 Spring Pad for 48367 | 34 | AV426 | Gearbox Fixing Screw for 48367 | 54 |
| AV387 | Blunt Head (Ordinary Type) for 48367 | 15 | AV407 | M5 Hex Nut for 48367 | 35 | AV427 | Motor Spacer for 48367 | 55 |
| AV388 | Injection Scraper for 48367 | 16 | AV408 | Handwheel Cover for 48367 | 36 | AV428 | Gear Shaft Pin for 48367 | 56 |
| AV389 | Roller Spindle for 48367 | 17 | AV409 | 20 Type Decorative Ring for 48367 | 37 | AV429 | Combination Helical Gear for 48367 | 57 |
| AV390 | Roller Secondary Shaft Spindle for 48367 | 18 | AV410 | Power Cord for 48367 | 38 | AV430 | Wall Mounted Intermediate Gear (Powder+Injection Molding) for 48367 | 58 |
| AV391 | Roller Plate for 48367 | 19 | AV411 | Plum Shaped Socket Component for 48367 | 39 | AV431 | Fixed Plate Cover for 48367 | 59 |
| AV392 | Upper Screw (Long) for 48367 | 20 | AV412 | Internal Wiring of Type III Electric Button Switch for 48367 | 40 | AV432 | φ6 Spring Pad for 48367 | 60 |