

INSTRUCTION MANUAL

Pasta Machines

Item	13231	13232
Model	PM-IT-0210-M	PM-IT-0210



Warning!

Before you begin using your appliance, **PLEASE READ AND UNDERSTAND THIS DOCUMENT CAREFULLY** before installing, operating, maintaining, or servicing.

There are many important safety messages in this manual and on your appliance. Always read all safety messages.

Failure to do so can result in appliance failure, property damage, serious injury or death. Appliance failure, injury or property damage due to improper installation is not covered by warranty.

Stop!

DO NOT RETURN THIS PRODUCT TO THE STORE!

For questions or assistance with this product, call TRENTO Toll free: **1-833-487-3686** or visit the support section from our website, **www.trentoequipment.com**

Version: Revised - 03/19/2026



TABLE OF CONTENTS

Section	Page
General Information -----	3 - 4
Safety and Warranty -----	4 - 5
Technical Specifications -----	5 - 6
Operation -----	6 - 7
Maintenance -----	7
Troubleshooting -----	8
Illustrated Examples -----	9
Parts Breakdown -----	10 - 13
Electrical Schematics -----	14
Warranty Registration -----	15

GENERAL INFORMATION

Omcan Manufacturing and Distributing Company Inc., Food Machinery of America, Inc. dba Omcan and Omcan Inc. are not responsible for any harm or injury caused due to any person's improper or negligent use of this equipment. The product shall only be operated by someone over the age of 18, of sound mind, and not under the influence of any drugs or alcohol, who has been trained in the correct operation of this machine, and is wearing authorized, proper safety clothing. Any modification to the machine voids any warranty, and may cause harm to individuals using the machine or in the vicinity of the machine while in operation.

CHECK PACKAGE UPON ARRIVAL

Upon receipt of an Omcan shipment please inspect for external damage. If no damage is evident on the external packaging, open carton to ensure all ordered items are within the box, and there is no concealed damage to the machine. If the package has suffered rough handling, bumps or damage (visible or concealed), please note it on the bill of lading before accepting the delivery and contact Omcan within 24 hours, so we may initiate a claim with the carrier. A detailed report on the extent of the damage caused to the machine must be filled out within three days, from the delivery date shown in the shipping documents. Omcan has no recourse for damaged products that were shipped collect or third party.

Before operating any equipment, always read and familiarize yourself with all operation and safety instructions.

Omcan would like to thank you for purchasing this machine. It's of the utmost importance to save these instructions for future reference. Also save the original box and packaging for shipping the equipment if servicing or returning of the machine is required.

Omcan Fabrication et distribution Compagnie Limitée et Food Machinery d'Amérique, dba Omcan et Omcan Inc. ne sont pas responsables de tout dommage ou blessure causé du fait que toute personne ait utilisé cet équipement de façon irrégulière. Le produit ne doit être exploité que par quelqu'un de plus de 18 ans, saine d'esprit, et pas sous l'influence d'une drogue ou d'alcool, qui a été formé pour utiliser cette machine correctement, et est vêtu de vêtements de sécurité appropriés. Toute modification de la machine annule toute garantie, et peut causer un préjudice à des personnes utilisant la machine ou des personnes à proximité de la machine pendant son fonctionnement.

VÉRIFIEZ LE COLIS DÈS RÉCEPTION

Dès réception d'une expédition d'Omcan veuillez inspecter pour dommages externes. Si aucun dommage n'est visible sur l'emballage externe, ouvrez le carton afin de s'assurer que tous les éléments commandés sont dans la boîte, et il n'y a aucun dommage dissimulé à la machine. Si le colis n'a subi aucune mauvaises manipulations, de bosses ou de dommages (visible ou cachée), notez-le sur le bond de livraison avant d'accepter la livraison et contactez Omcan dans les 24 heures qui suivent, pour que nous puissions engager une réclamation auprès du transporteur. Un rapport détaillé sur l'étendue des dommages causés à la machine doit être rempli dans un délai de trois jours, à compter de la date de livraison indiquée dans les documents d'expédition. Omcan n'a aucun droit de recours pour les produits endommagés qui ont été expédiés ou cueillis par un tiers transporteur.

Avant d'utiliser n'importe quel équipement, toujours lire et vous familiariser avec toutes les opérations et les

GENERAL INFORMATION

consignes de sécurité.

Omcan voudrais vous remercier d'avoir choisi cette machine. Il est primordial de conserver ces instructions pour une référence ultérieure. Également conservez la boîte originale et l'emballage pour l'expédition de l'équipement si l'entretien ou le retour de la machine est nécessaire.

Omcan Empresa De Fabricacion Y Distribucion Inc. Y Maquinaria De Alimentos De America, Inc. dba Omcan y Omcan Inc. no son responsables de ningun daño o perjuicio causado por cualquier persona inadecuada o el uso descuidado de este equipo. El producto solo podra ser operado por una persona mayor de 18 años, en su sano juicio y no bajo alguna influencia de droga o alcohol, y que este ha sido entrenado en el correcto funcionamiento de esta máquina, y ésta usando ropa apropiada y autorizada. Cualquier modificación a la máquina anula la garantía y puede causar daños a las personas usando la máquina mientras esta en el funcionamiento.

REVISE EL PAQUETE A SU LLEGADA

Tras la recepcion de un envio Omcan favor inspeccionar daños externos. Si no hay daños evidentes en el empaque exterior, Habra el carton para asegurarse que todos los articulos solicitados estén dentro de la caja y no encuentre daños ocultos en la máquina. Si el paquete ha sufrido un manejo de poco cuidado, golpes o daños (visible o oculto) por favor anote en la factura antes de aceptar la entrega y contacte Omcan dentro de las 24 horas, de modo que podamos iniciar una reclamación con la compañía. Un informe detallado sobre los daños causados a la máquina debe ser llenado en el plazo de tres días, desde la fecha de entrega que se muestra en los documentos de envío. Omcan no tiene ningun recurso por productos dañados que se enviaron a recoger por terceros.

Antes de utilizar cualquier equipo, siempre lea y familiarizarse con todas las instrucciones de funcionamiento y seguridad.

Omcan le gustaría darle las gracias por la compra de esta máquina. Es de la mayor importancia para salvar estas instrucciones para futuras consultas. Además, guarda la caja original y el embalaje para el envío del equipo si servicio técnico o devolución de la máquina que se requiere.

SAFETY AND WARRANTY

THIS MANUAL IS AN INTEGRAL PART OF THE MACHINE

This machine is not a toy. When in use it must be kept out of the reach of children. Do not use this machine while wearing garments or aprons with flaps which may catch in the moving parts of the pasta machine or the cutting blades. Other than hygienic reasons, ensure that hair is tied back for the reason previously stated (it is advisable to use a protective cap) and remove any items which may cause danger (necklaces, bracelets, etc.). Do not use the machine if it is not working correctly or has been damaged. When making any inquiries or when contacting the authorized retailer, quote the model and the serial number.

SAFETY AND WARRANTY

RESIDENTIAL USERS: Vendor assumes no liability for parts or labor coverage for component failure or other damages resulting from installation in non-commercial or residential applications. The right is reserved to deny shipment for residential usage; if this occurs, you will be notified as soon as possible.

6 MONTHS PARTS AND LABOR BENCH WARRANTY FOR 13231

1 YEAR PARTS AND LABOR BENCH WARRANTY FOR 13232

Within the warranty period, contact Omcan Inc. at 1-800-465-0234 to schedule a drop off to either an Omcan authorized service depot in the area, or to an Omcan Service warehouse to repair the equipment.

Unauthorized maintenance will void the warranty. Warranty covers electrical and part failures, not improper use.

Please see <https://omcan.com/disclaimer> for complete info.

WARNING:

The packaging components (cardboard, polyethylene, and others) are classified as normal solid urban waste and can therefore be disposed of without difficulty.

In any case, for suitable recycling, we suggest disposing of the products separately (differentiated waste) according to the current norms.

DO NOT DISCARD ANY PACKAGING MATERIALS IN THE ENVIRONMENT!

TECHNICAL SPECIFICATIONS

DESCRIPTION OF THE MACHINE (FIG 1)

The parts of the machine are:

1. Machine body.
2. Tray (support for the pasta sheet).
3. Handle (large) for the machine body.
4. Simplex cutting accessory (supplied only by request).

TECHNICAL SPECIFICATIONS

Item Number	13231	13232
Model	PM-IT-0210-M	PM-IT-0210
Roller Length	8.25" / 210mm	
Max. Roller Opening	0.4" / 9.5mm	
Electrical	N/A	110-120V / 60Hz / 1
Net Weight	22 lbs. / 10 kgs.	35.5 lbs. / 16.1 kgs.
Packaging Weight	24 lbs. / 10.9 kgs.	36 lbs. / 16.3 kgs.
Net Dimensions	8.5" x 12.8" x 9.8" / 216 x 324 x 248mm	8.5" x 14" x 10" / 216 x 356 x 254mm
Packaging Dimensions	14" x 17" x 15" / 356 x 432 x 381mm	

OPERATION

USE OF THE PASTA MACHINE (FIG. 2)

BEFORE USE AND AFTER USE:

Follow the instructions described in the maintenance section.

1. Position the machine on a flat stable surface which can bear the weight.
2. Fit the tray (A) to the supports (C1) upwards.
3. Plug in the machine and turn on the master switch to position "1".
4. The dough must be kept at room temperature.
5. After turning the knob (P) to position 10 place part of the prepared dough on the rollers between the protection rods (A1) until you reach the machine's pull-sheet rollers; it is necessary that the dough is lightly smoothed by hand before inserting it between the protective rods to facilitate entry and obtain a first shaping of the sheet.

ATTENTION: do not use knives or other utensils which might damage the rollers.

IT IS EXPRESSLY FORBIDDEN: apply pressure to the pasta to facilitate its insertion between the protection rods (A1) with improper tools.

6. To roll out the pasta and obtain a pasta sheet turn the regulator (P) anti-clockwise to reduce the distance between the drawing rollers; insert the sheet obtained with the previous molding between the protection rods until the dough is gripped by the forming rollers. Repeat this operation until the sheet is of the required thickness.

TO DISMANTLE THE MACHINE (on finishing work): turn the master switch to position "0", remove the plug from the socket, release the pasta hopper (A) from the supports (C1).

OPERATION

USING THE SIMPLEX CUTTING ACCESSORY (FIG. 3, 4, 5)

BEFORE USE AND AFTER USE:

Follow the instructions described in the maintenance section prior to use.

1. Place the machine on a suitable surface.
2. Insert the supplied pin (F) in the pasta hopper (B).
3. Insert the pasta hopper (B) in the special seat (G1).
4. Turn the taglia-sfoglia (B) clockwise until it is completely fixed (Fig. 4).
5. Fit the pasta hopper (A) on to the supports (C1).
6. Plug in the machine and turn the master switch to position "I". The machine will start moving so that the transmission arm (F) can be inserted.
7. Push the ready prepared sheet of pasta through the cutting rollers..

TO DISMANTLE THE MACHINE (on finishing work): turn the master switch to position "0", remove the plug from the socket. Rotate the pasta hopper accessory counterclockwise; remove the same accessory and then remove the pin.

MAINTENANCE

Gears are made from tempered steel turning on ground pins. Self-lubricating bearings. Regulator knob with numbered indicator of 10 levels of thickness of pasta sheet. Cleaning is the only maintenance normally required.

BEFORE USE

Clean the machine thoroughly with a dry cloth or a soft brush. After fixing the machine to a suitable surface the cleaning operation can be completed by passing a piece of pasta through the rollers and the cutters (to remove any dust). The pasta used for this operation should then be thrown away. Never wash the machine body or the accessory under running water or using detergent. Never wash any part of the machine or the accessory in a dishwasher.

AFTER USE

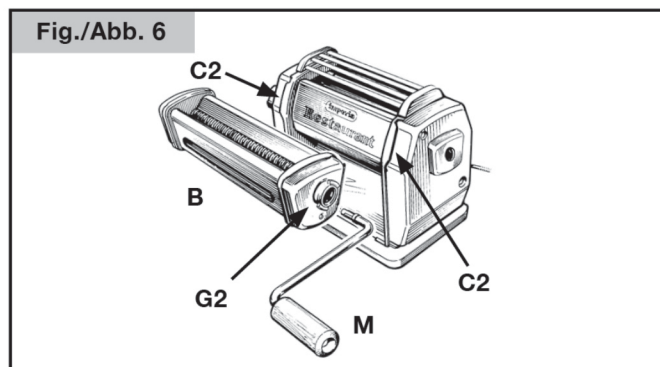
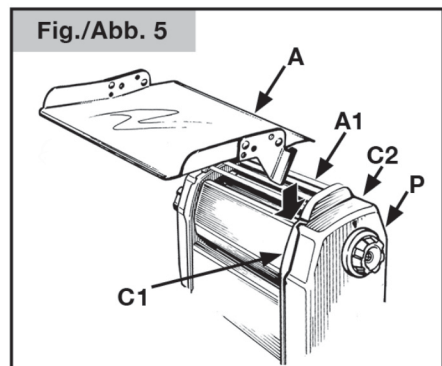
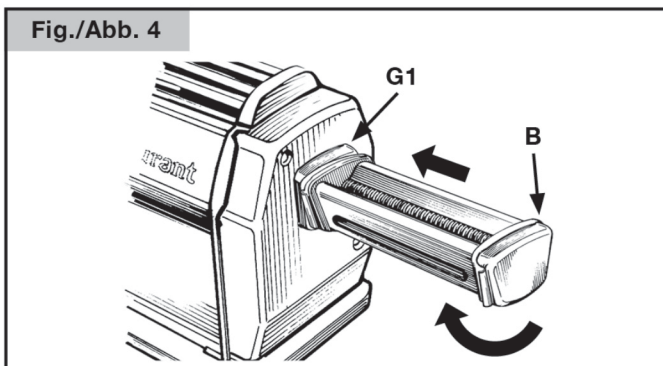
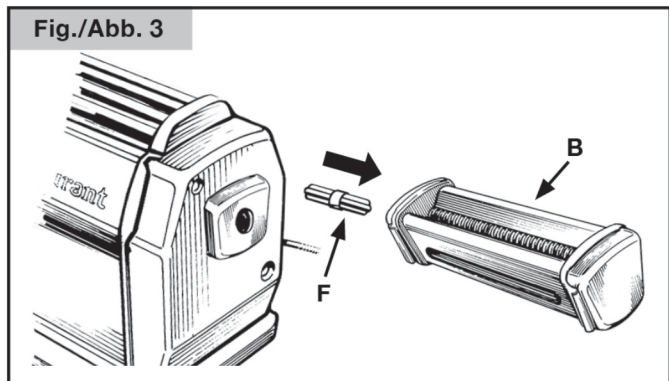
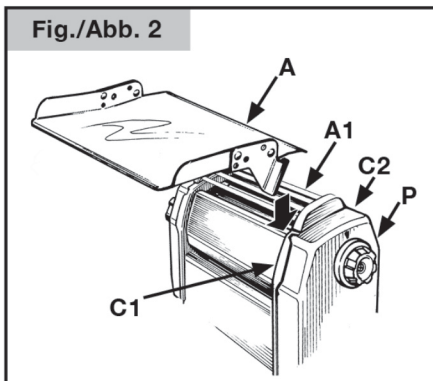
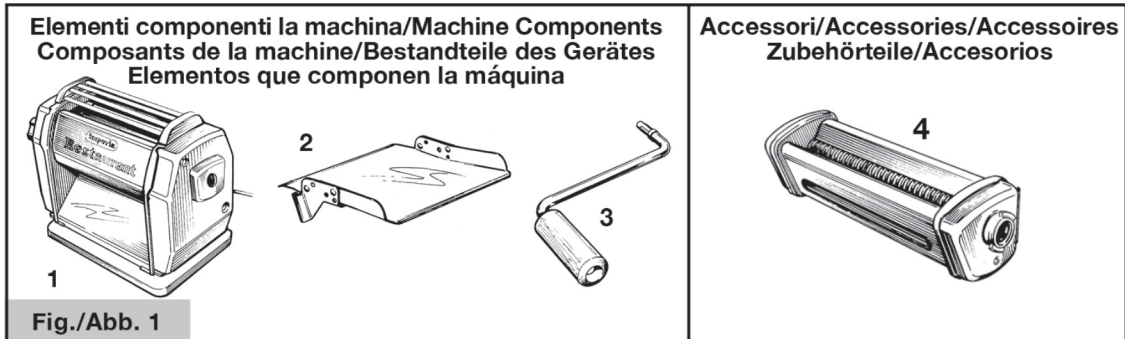
Do not remove residues of pasta using sharp objects. Never wash the machine body or the accessory under running water or using detergent. Never wash any part of the machine or the accessory in a dishwasher. Check that the parts are perfectly dry before putting them away.

TROUBLESHOOTING

Problem	Probable Cause	Solution
If the machine won't start or stops suddenly.	The machine is not plugged in or the plug is not fully inserted into the socket.	Plug in the machine correctly.
	The master switch is in position "0".	Place the master switch in position "1".

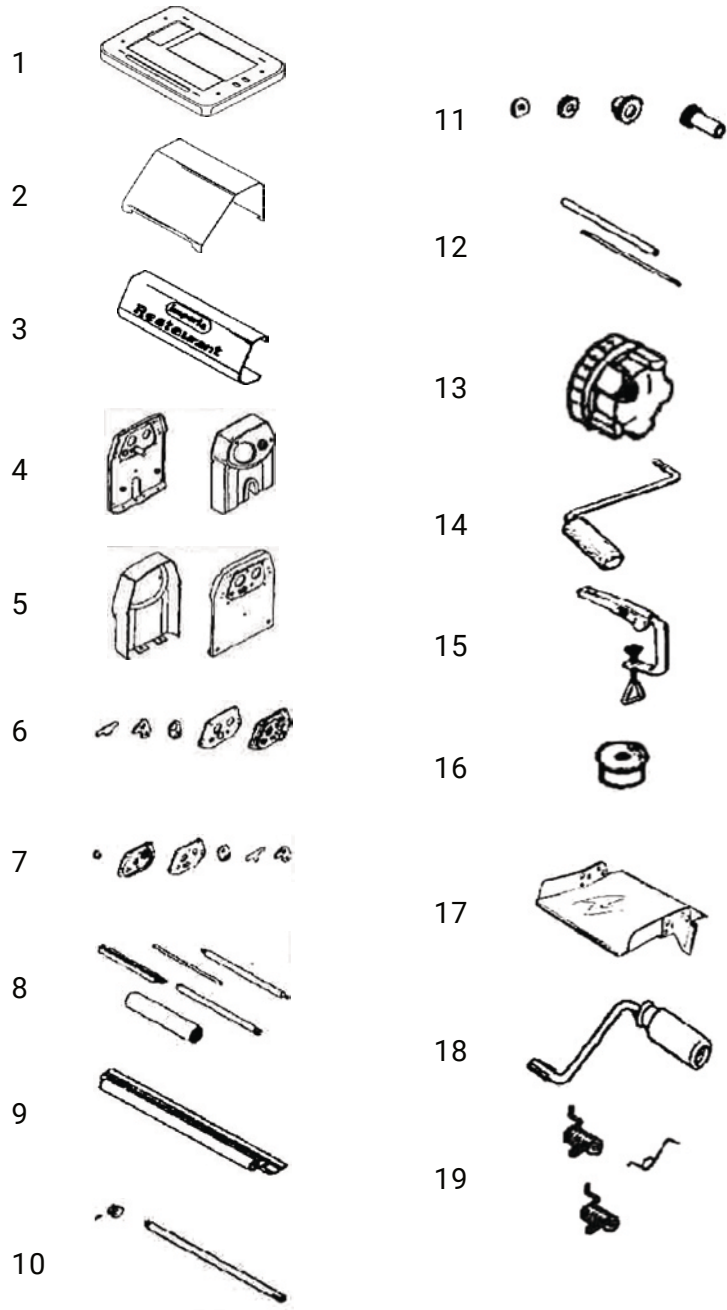
If the above solutions do not resolve the problem contact the nearest Authorized Retailer.

ILLUSTRATED EXAMPLES



PARTS BREAKDOWN

ITEM	MODEL
13231	PM-IT-0210-M



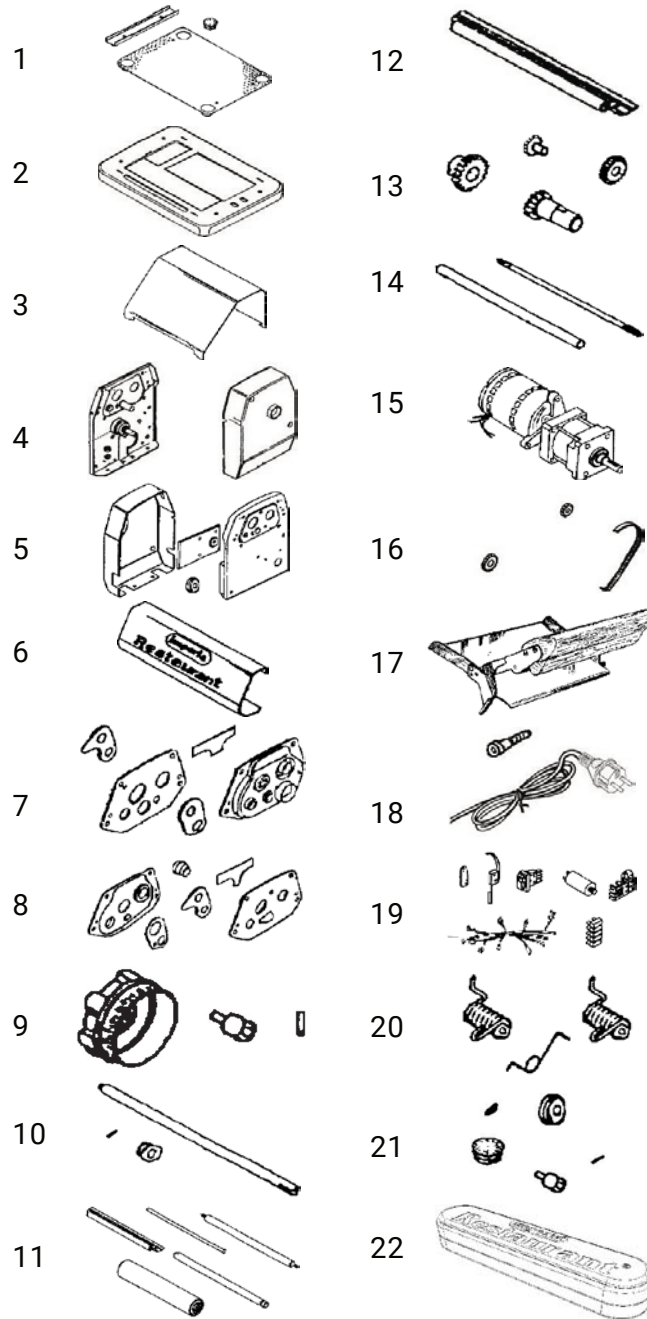
PARTS BREAKDOWN

ITEM	MODEL
13231	PM-IT-0210-M

Item No.	Description	Position	Item No.	Description	Position	Item No.	Description	Position
15952	BASE FOR 13231	1	41628	ROLLER KIT FOR 13231	8	15965	CLAMP KIT FOR 13231	15
15953	SLIDE FOR 13231	2	44988	SCRAPERS FOR 13231	9	15966	FOOT SET FOR 13231	16
15954	COVER FOR 13231	3	15960	CENTRIFIC PIN KIT FOR 13231	10	15967	TRAY FOR 13231	17
15955	SIDE COVER KIT (LEFT) FOR 13231	4	15961	GEAR KIT FOR 13231	11	15964	HANDLE LARGE FOR 13231	18
15956	SIDE COVER KIT (RIGHT) FOR 13231	5	15962	TIE ROD KIT FOR 13231	12	15968	SPRING KIT FOR 13231	19
15957	PINION SUPPORT KIT (LEFT) FOR 13231	6	15963	KNOB FOR 13231	13			
15958	PINION SUPPORT KIT (RIGHT) FOR 13231	7	16007	HANDLE SMALL FOR 13231	14			

PARTS BREAKDOWN

ITEM	MODEL
13232	PM-IT-0210



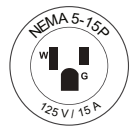
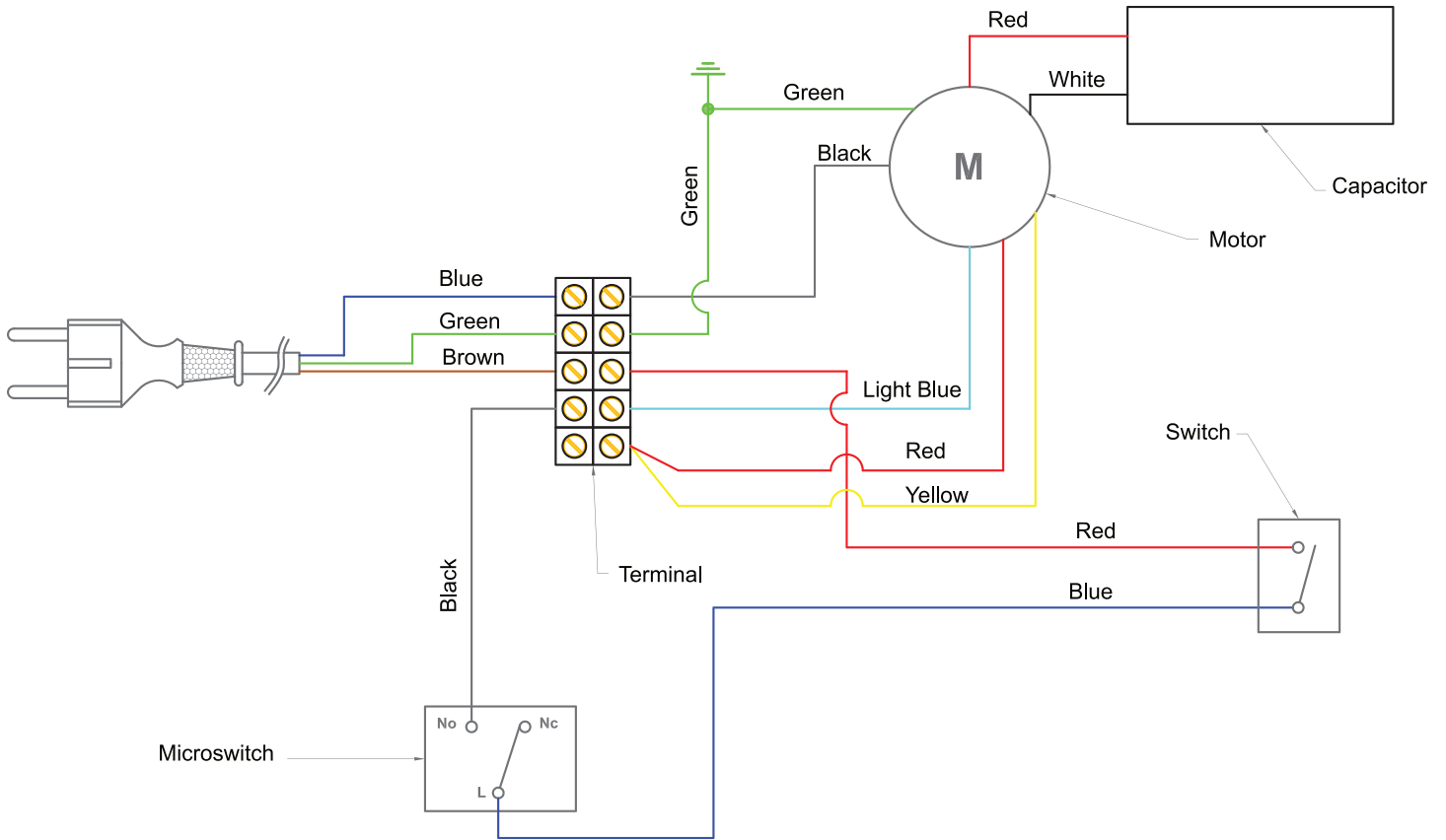
PARTS BREAKDOWN

ITEM	MODEL
13232	PM-IT-0210

Item No.	Description	Position	Item No.	Description	Position	Item No.	Description	Position
15970	BOTTOM COVER KIT FOR 13232	1	15973	KNOB KIT FOR 13232	9	15984	TRAY WITH GUARD FOR 13232	17
15997	BASE SUPPORT FOR 13232	2	15978	CENTRIFC PIN KIT FOR 13232	10	16006	CORD 120V FOR 13232	18
15971	SLIDE FOR 13232	3	41628	ROLLER KIT FOR 13232	11	41636	ELECTRICAL SWITCH KIT (NEW) FOR 13232	19
15974	SIDE COVER KIT (RIGHT) FOR 13232	4	44988	SCRAPERS FOR 13232	12	15968	SPRING KIT FOR 13232	20
15974	SIDE COVER KIT (RIGHT) FOR 13232	5	15980	GEAR KIT (METAL) FOR 13232	13	15985	DIAL LOCK KIT FOR 13232	21
45081	NAME PLATE COVER FOR 13232	6	45082	TUBE & ROD KIT FOR 13232	14	15969	TRANSMISSION KIT FOR 13232	22
15977	PINION SUPPORT KIT (LEFT) FOR 13232	7	41915	MOTOR FOR 13232	15			
15975	PINION SUPPORT KIT (RIGHT) FOR 13232	8	41430	ASSEMBLY KIT BELT AND GEAR SET FOR 13232	16			

ELECTRICAL SCHEMATICS

ITEM	MODEL
13232	PM-IT-0210



WARRANTY REGISTRATION

Thank you for purchasing an Trento product. To register your warranty for this product, complete the information below, tear off the card at the perforation and then send to the address specified below. You can also register online by visiting:

Merci d'avoir acheté un produit Trento. Pour enregistrer votre garantie pour ce produit, complétez les informations ci-dessous, détachez la carte au niveau de la perforation, puis l'envoyer à l'adresse spécifiée ci-dessous. Vous pouvez également vous inscrire en ligne en visitant:

Gracias por comprar un producto Trento usted. Para registrar su garantía para este producto, complete la información a continuación, cortar la tarjeta en la perforación y luego enviarlo a la dirección indicada a continuación. También puede registrarse en línea en:

<https://omcan.com/warranty-registration/>

For mailing in Canada
Pour postale au Canada
Por correo en Canadá

For mailing in the US
Pour diffusion aux États-Unis
Por correo en los EE.UU.

TRENTO
PRODUCT WARRANTY REGISTRATION
3115 Pepper Mill Court,
Mississauga, Ontario
Canada, L5L 4X5

TRENTO
PRODUCT WARRANTY REGISTRATION
4450 Witmer Industrial Estates, Unit 4,
Niagara Falls, New York
USA, 14305

or email to: trentoservice@trentoequipment.com



Purchaser's Information

Name: _____

Address: _____

City: _____ Province or State: _____ Postal or Zip: _____

Country: _____

Dealer from which Purchased: _____

Dealer City: _____ Dealer Province or State: _____

Invoice: _____

Model Name: _____ Model Number: _____

Machine Description: _____

Date of Purchase (MM/DD/YYYY): _____

Would you like to extend the warranty? Yes No

Company Name: _____

Telephone: _____

Email Address: _____

Type of Company:

- Restaurant Bakery Deli
 Butcher Supermarket Caterer
 Institution (*specify*): _____
 Other (*specify*): _____

Serial Number: _____

Date of Installation (MM/DD/YYYY): _____

Thank you for choosing Trento | Merci d'avoir choisi Trento | Gracias por elegir Trento

TRENTO

ELEVATING CULINARY EXCELLENCE

TRENTO IS A SIGNATURE LINE OF PROFESSIONAL RESTAURANT EQUIPMENT FROM OMCAN OFFERING PREMIUM EUROPEAN BRANDS TO THE NORTH AMERICAN MARKET.

Thank you for your purchase!



Follow us on social media
@trentoequipment

